

See Page 22

38107 East of mt # 29

38957 West of Washington ave +  
 - course for center of block -

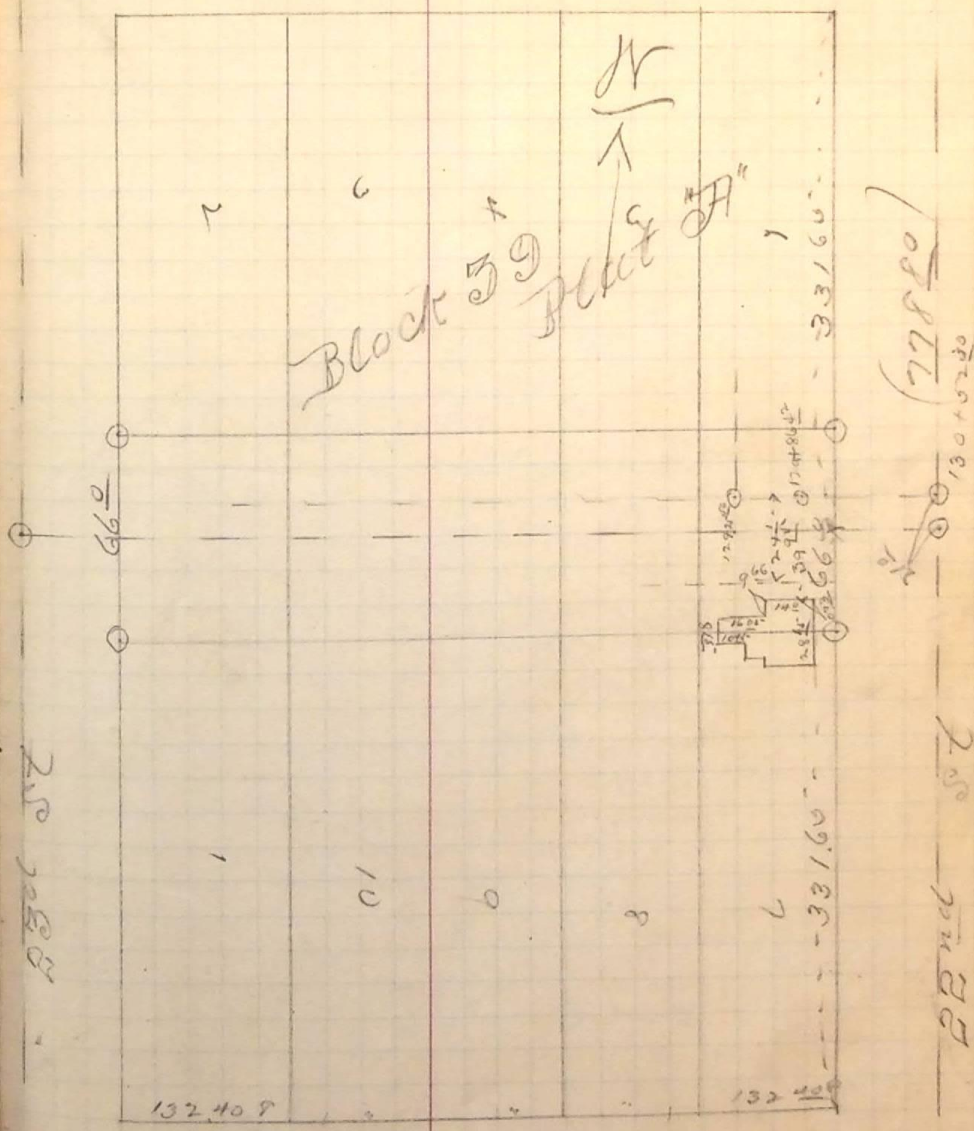
38115 found it to be 38102 split diff.  
 then chained from mt # 39 East  
 of block

Chained 38765 + set out for center  
 Just over mt # 7 S.D. on mt # 39

Washington curves  
 Equidistant between Grant and  
 through Block 39 Plat 'A'  
 Opening of a street 660 feet wide

Thursday P.M. April 3<sup>d</sup> 1890

Grant Ave 21  
 mt # 39



mt # 6 (761.04) Washington Ave mt # 7